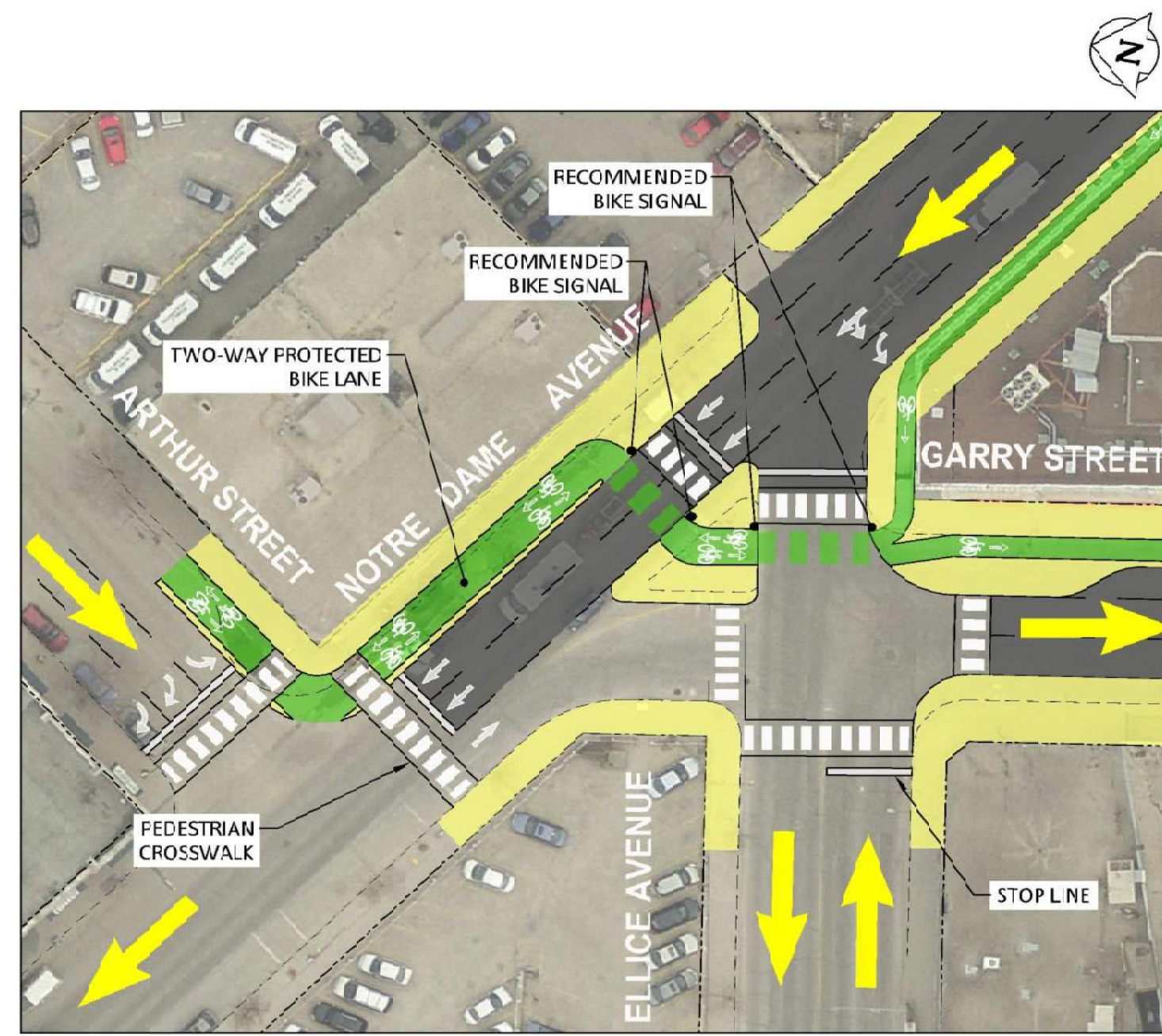
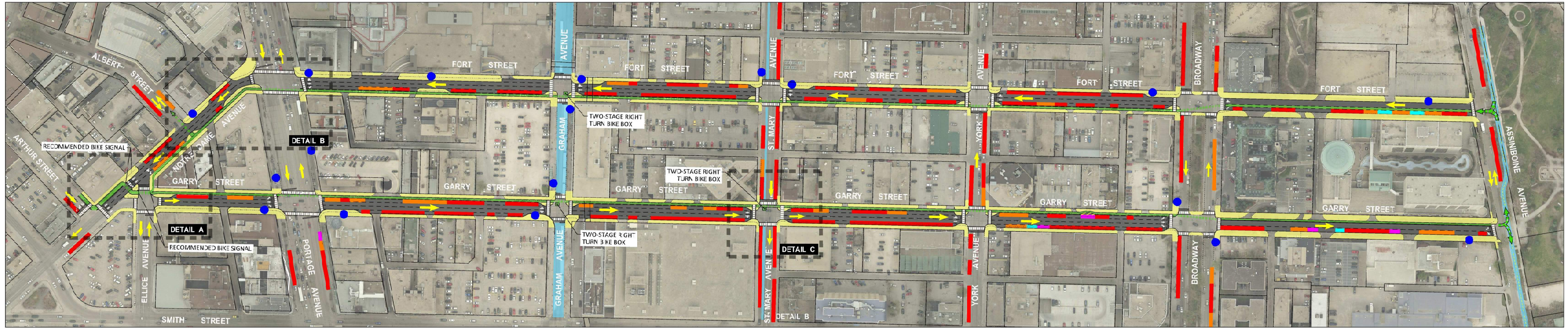
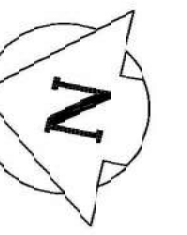
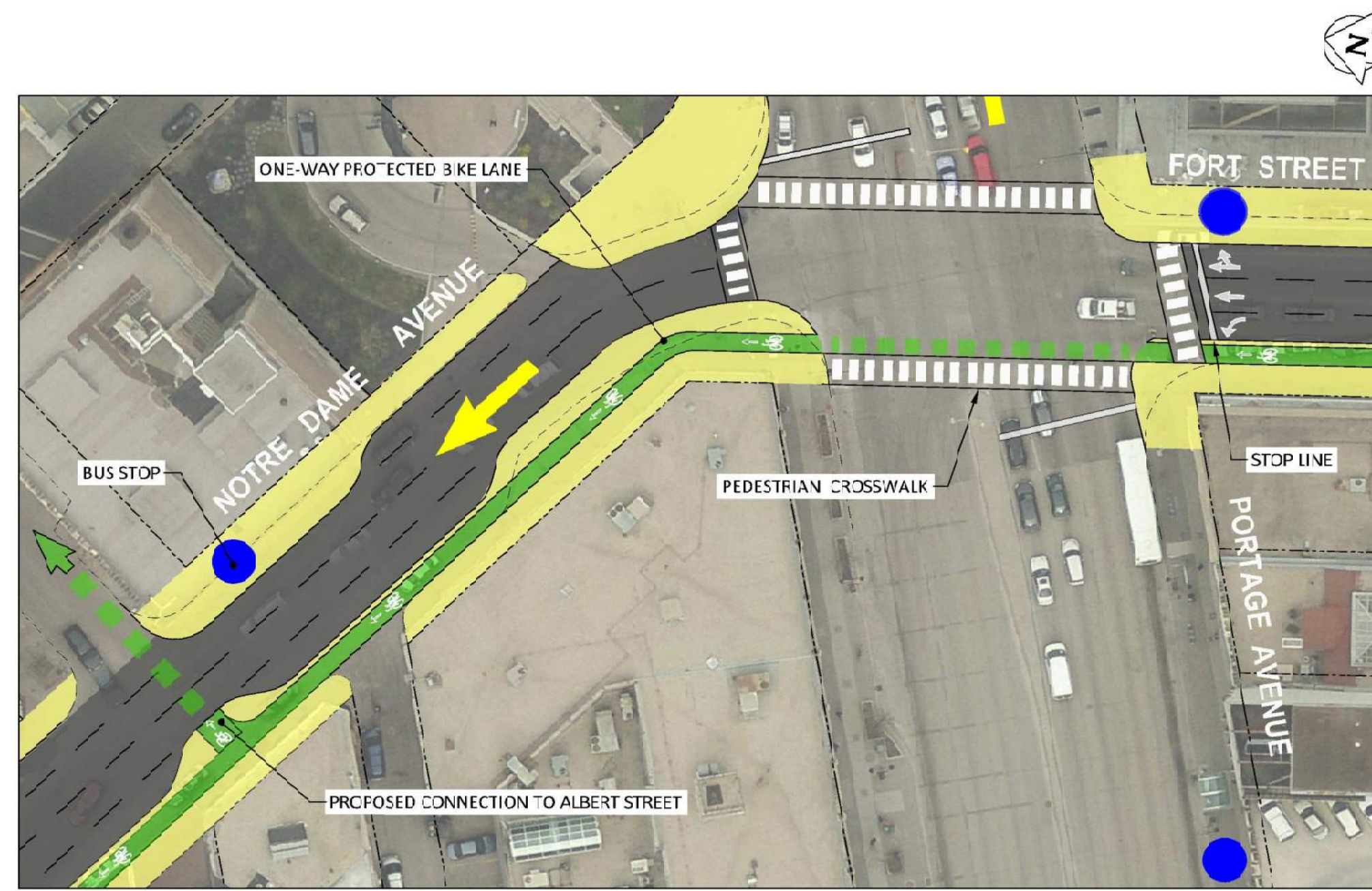


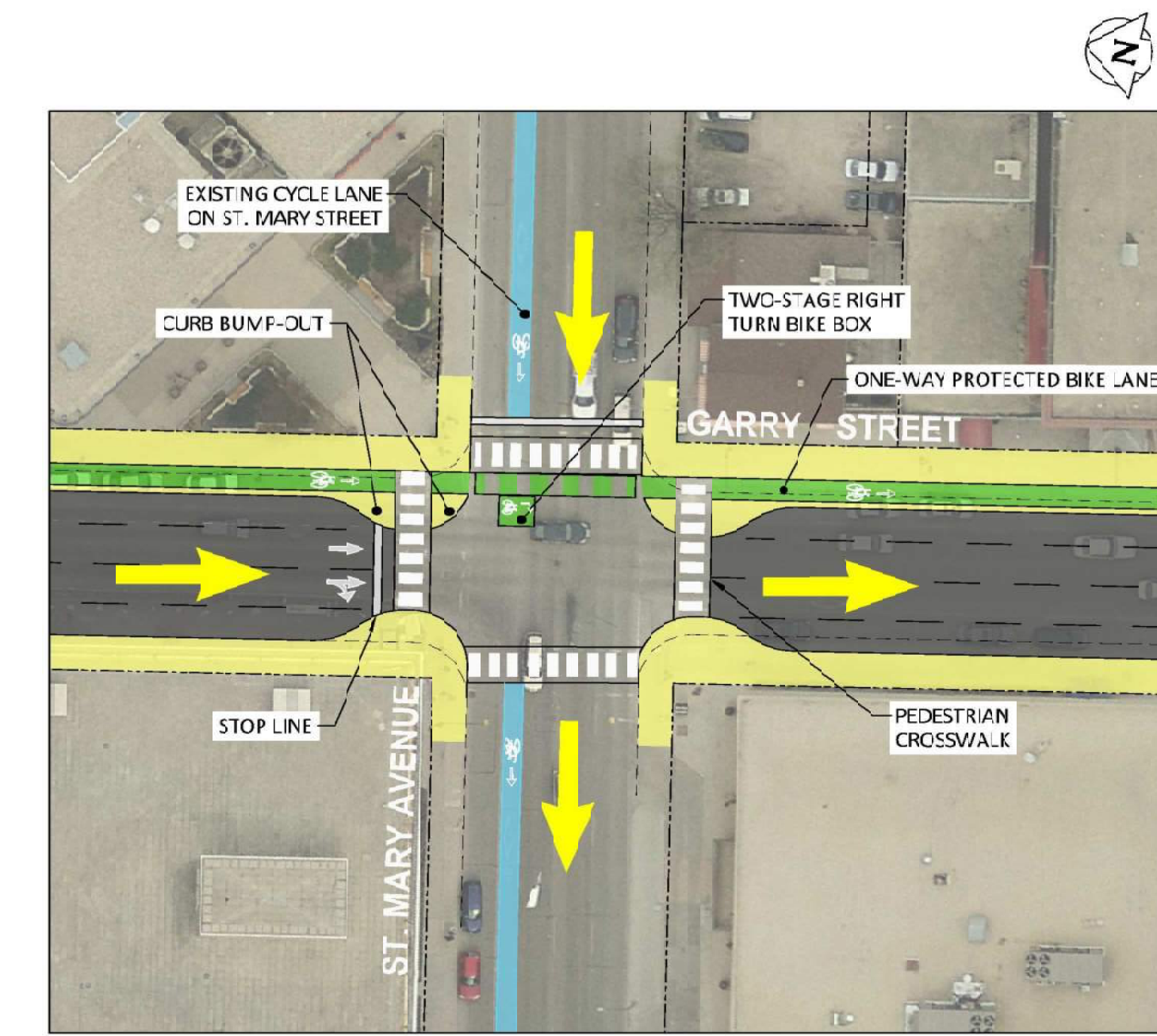
OPTION 2 ONE-WAY LEFT SIDE PROTECTED BIKE LANES ON FORT & GARRY STREETS



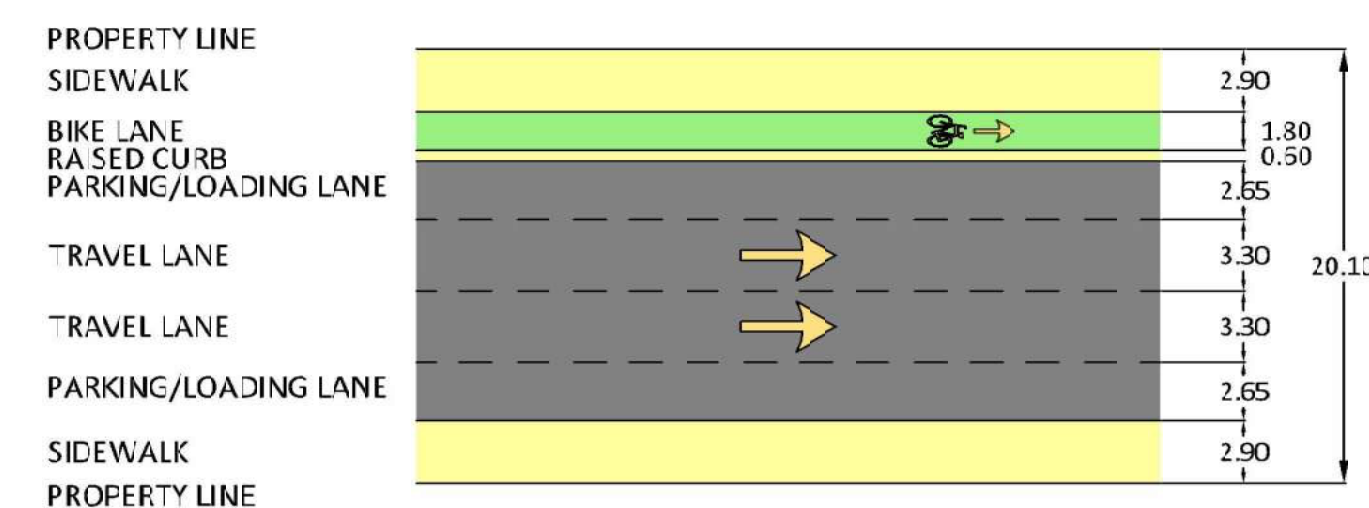
DETAIL A - ARTHUR STREET CONNECTION



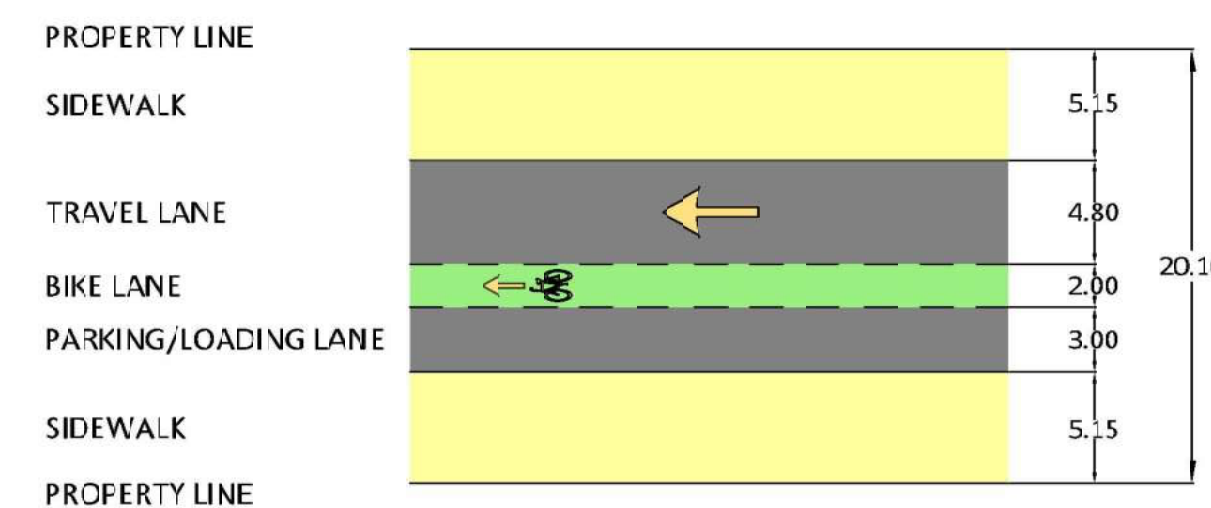
DETAIL B - FORT STREET AT PORTAGE AVENUE



DETAIL C - GARRY STREET AT ST. MARY STREET

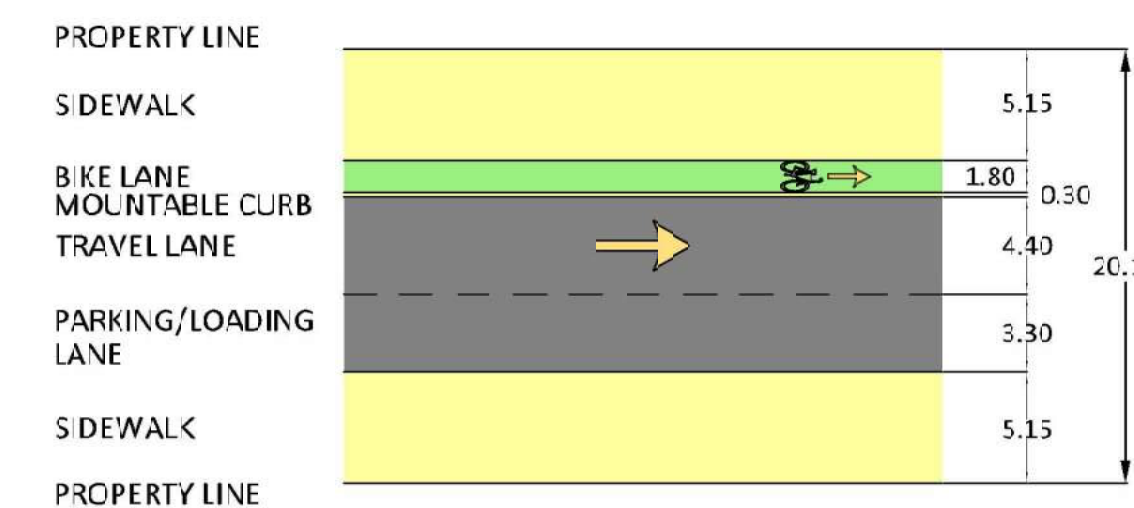


FORT STREET AND GARRY STREET NORTH OF BROADWAY
NTS



FORT STREET SOUTH OF BROADWAY
NTS

*ALL DIMENSIONS ARE TO THE BACK OF THE CURB (TYPICAL FOR ALL SECTIONS)



GARRY STREET SOUTH OF BROADWAY
NTS

LEGEND:

- PROPOSED SIDEWALK AND BOULEVARD
- PROPOSED BIKE LANE
- PROPOSED TRAVEL LANE
- PROPOSED PARKING
- PROPOSED ACCESSIBLE PARKING
- PROPOSED LOADING
- PROPOSED ACCESSIBLE LOADING
- PROPOSED CONNECTION
- EXISTING BIKE FACILITY
- EXISTING BUS STOP

